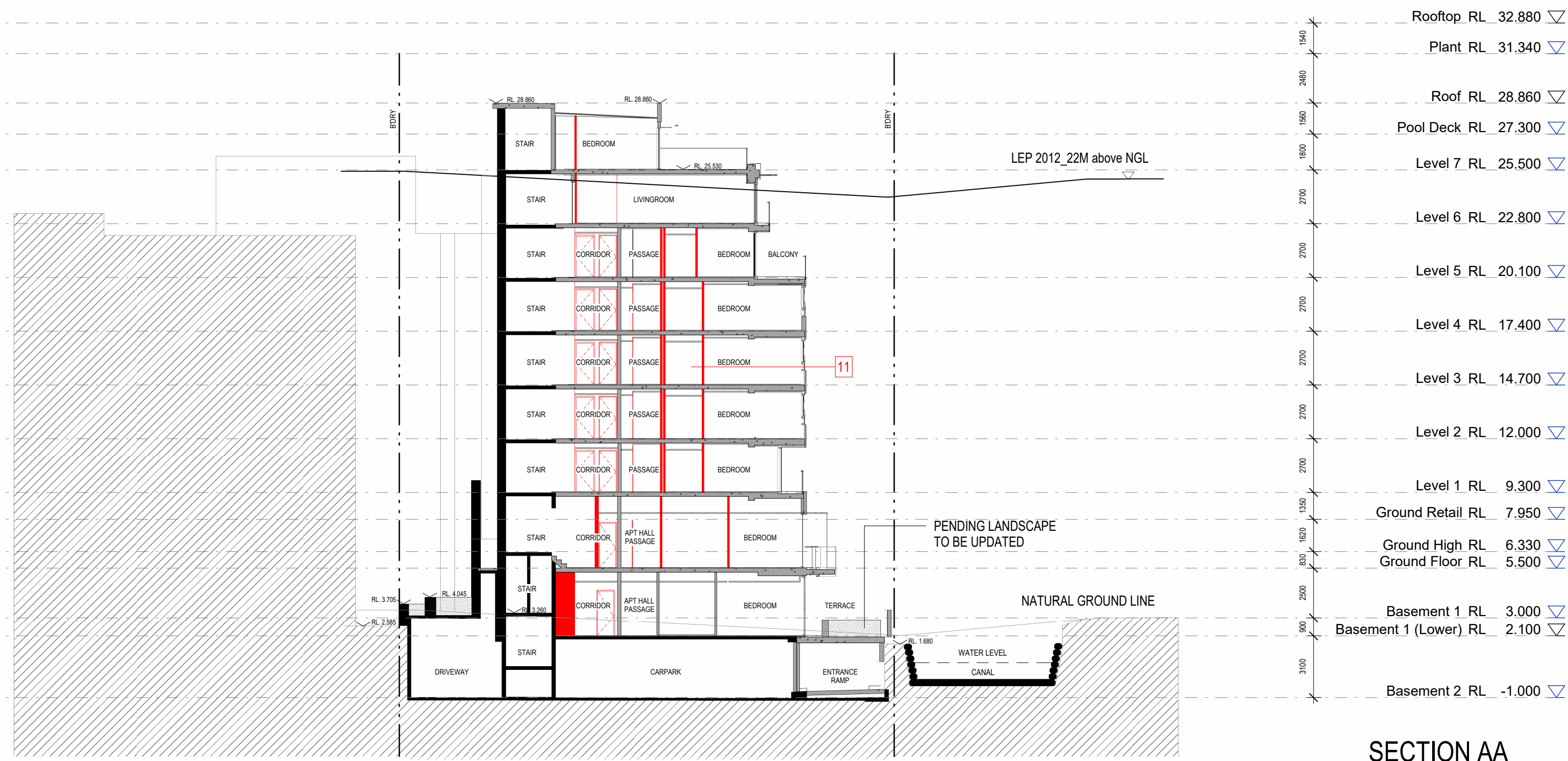


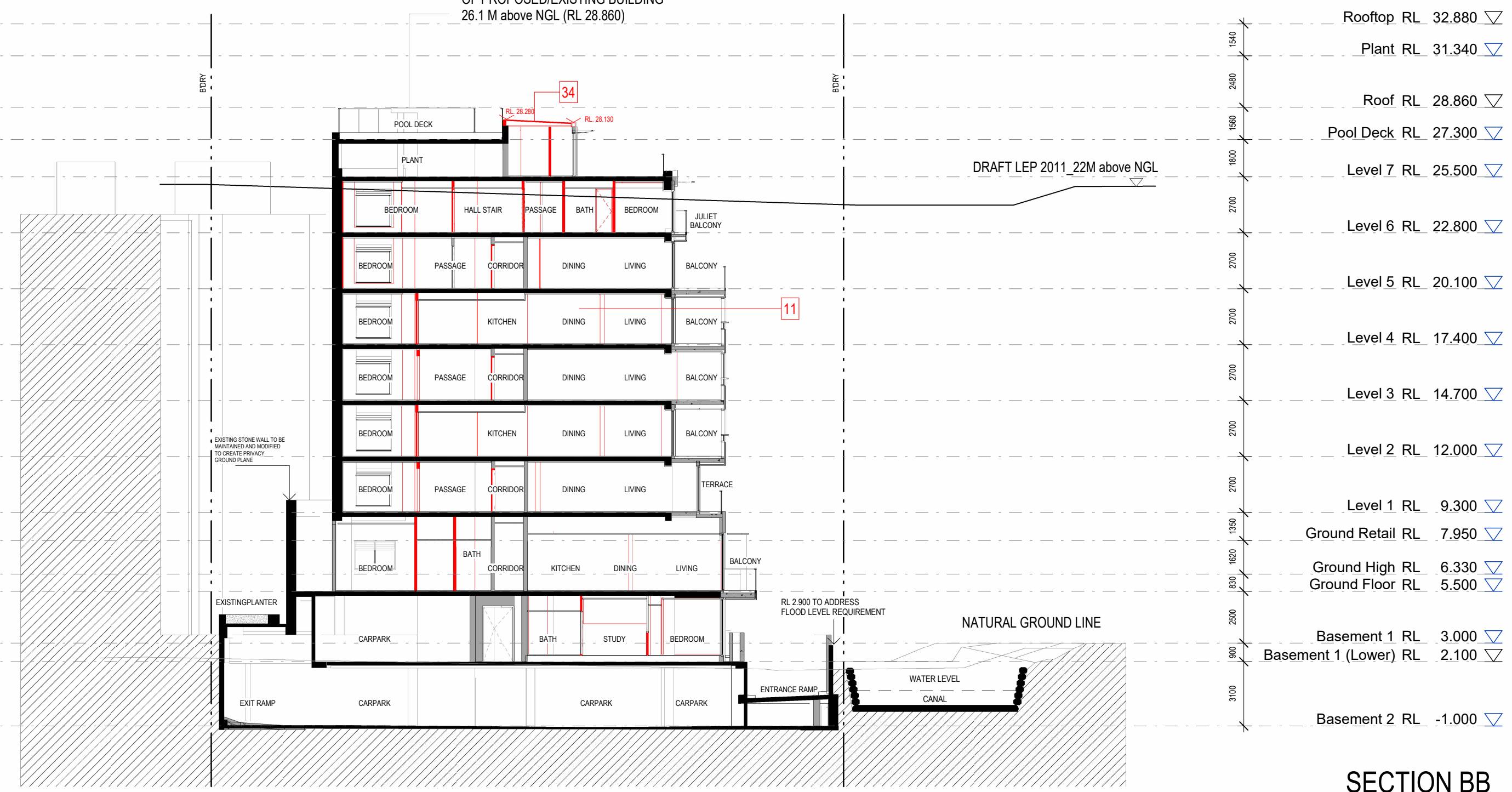
# **Attachment C4**

**Selected Approved Drawings (D/2012/939/J)**

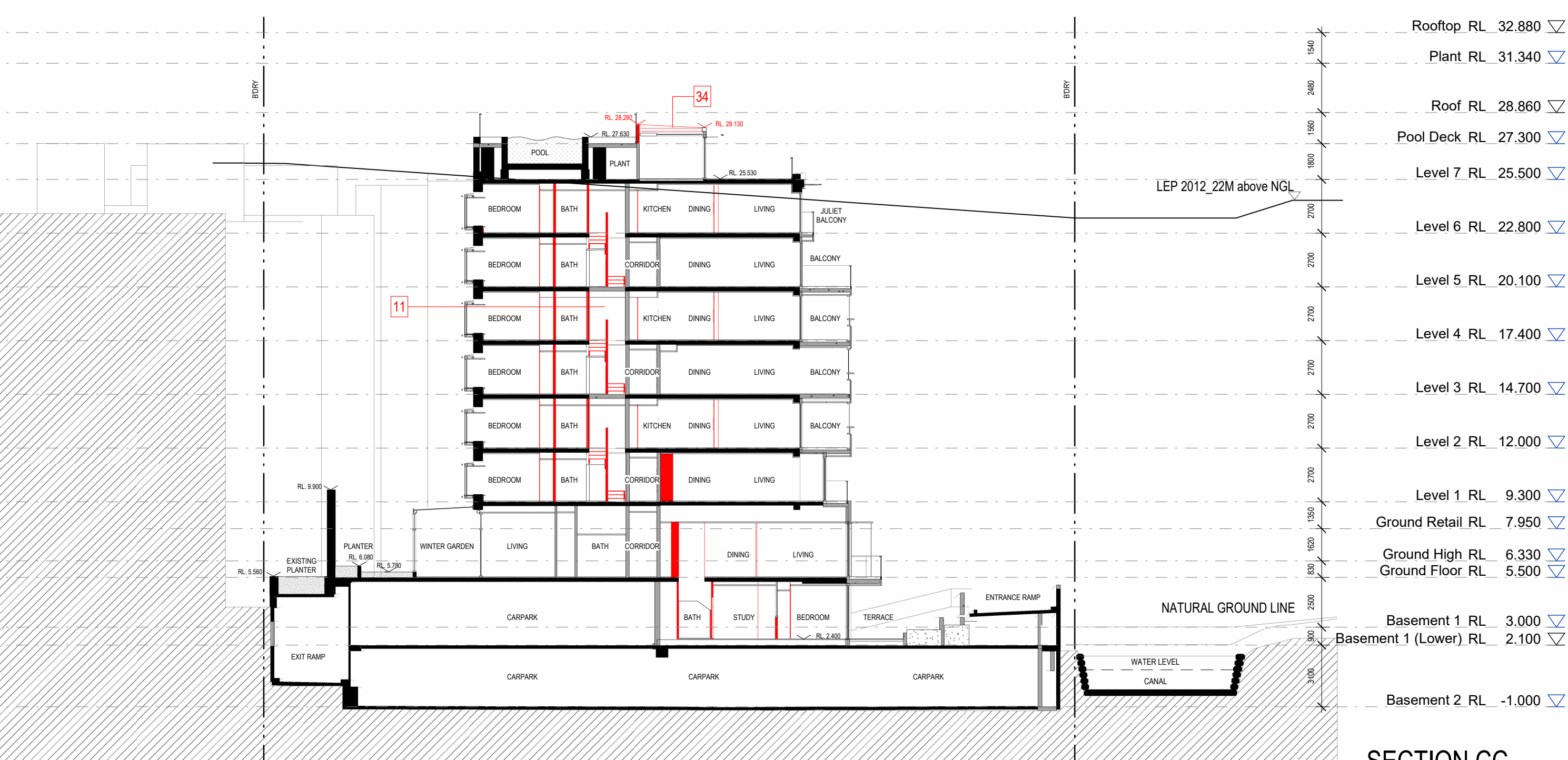




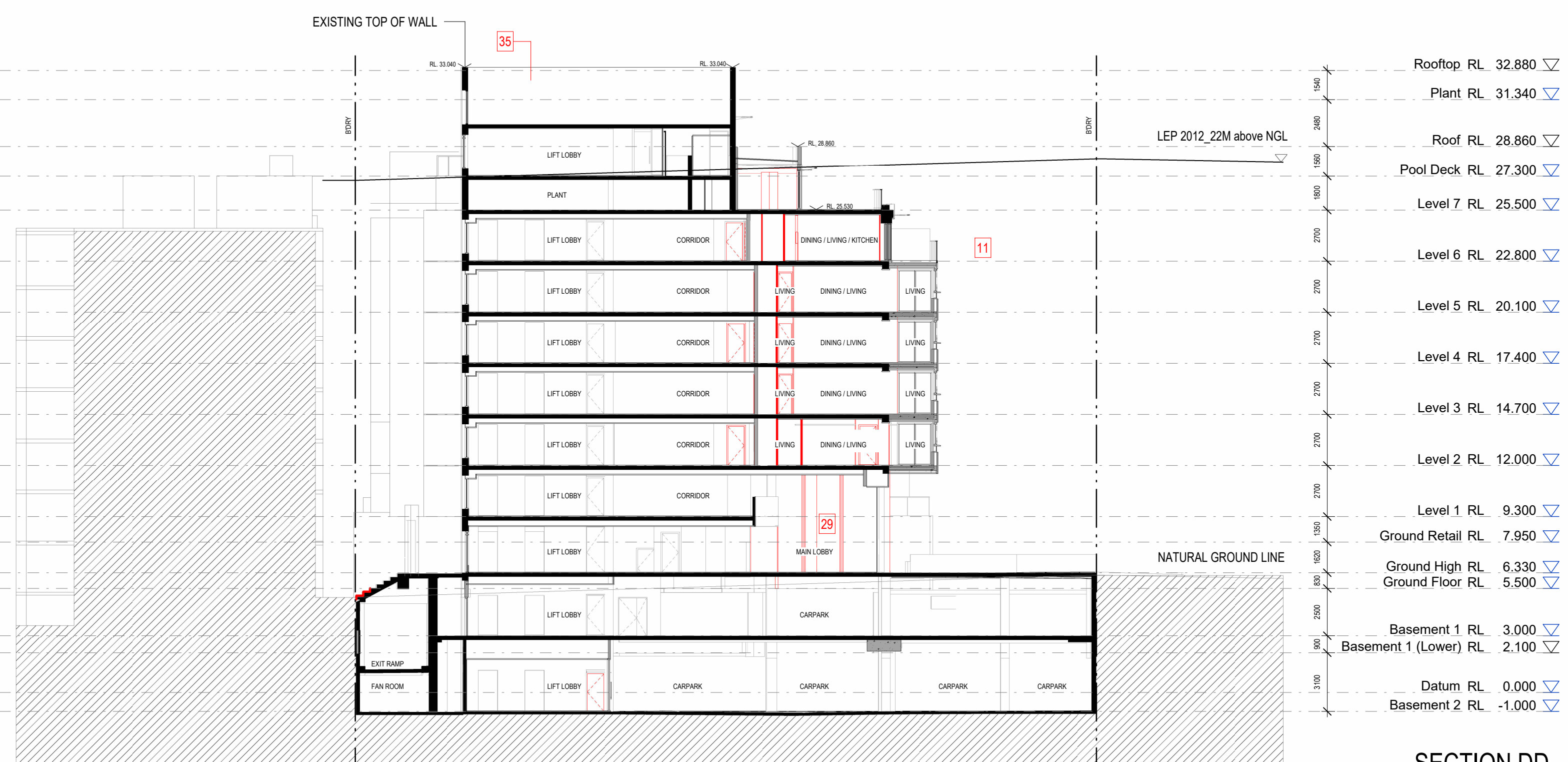
SECTION AA



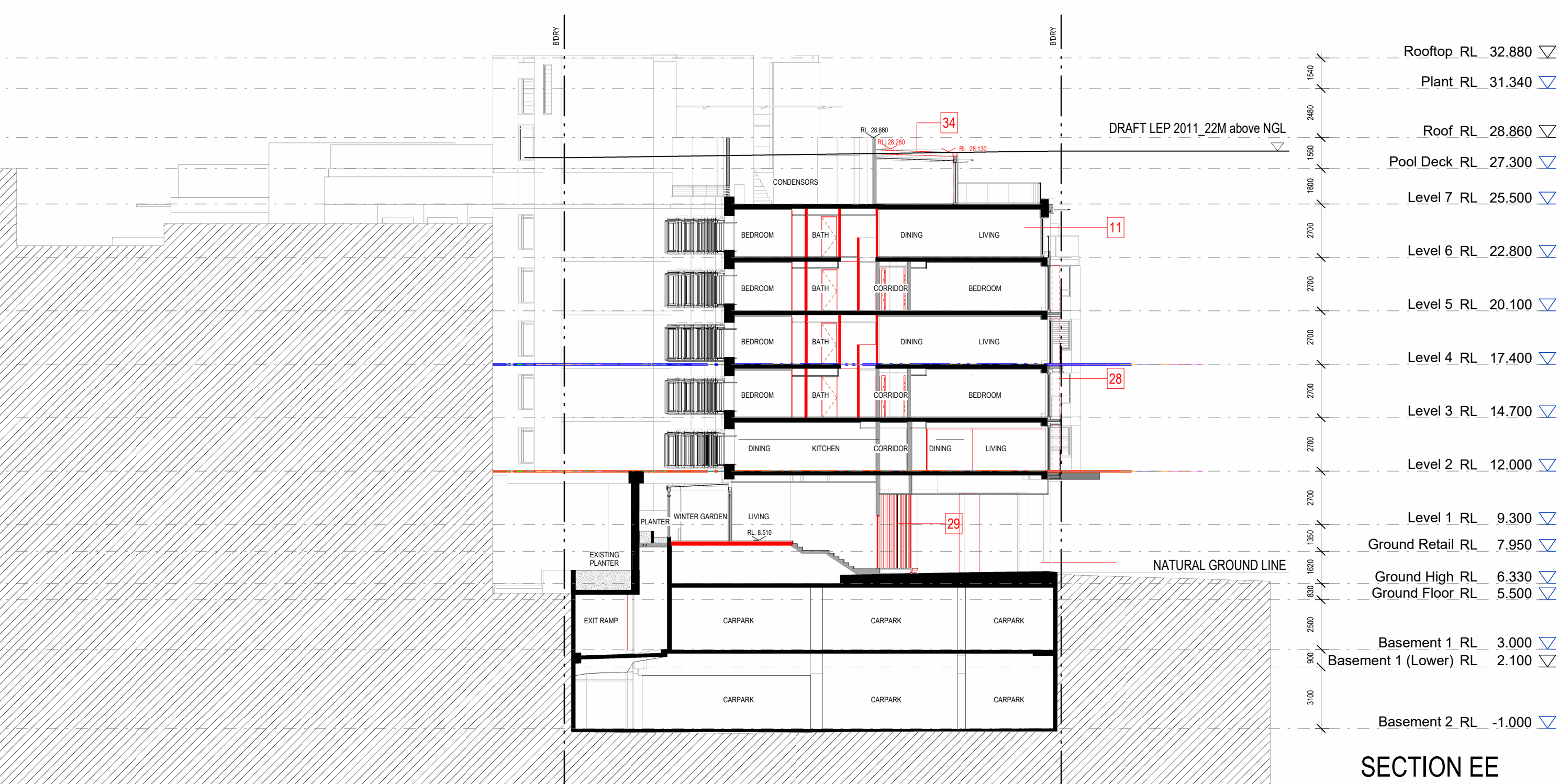
SECTION BB



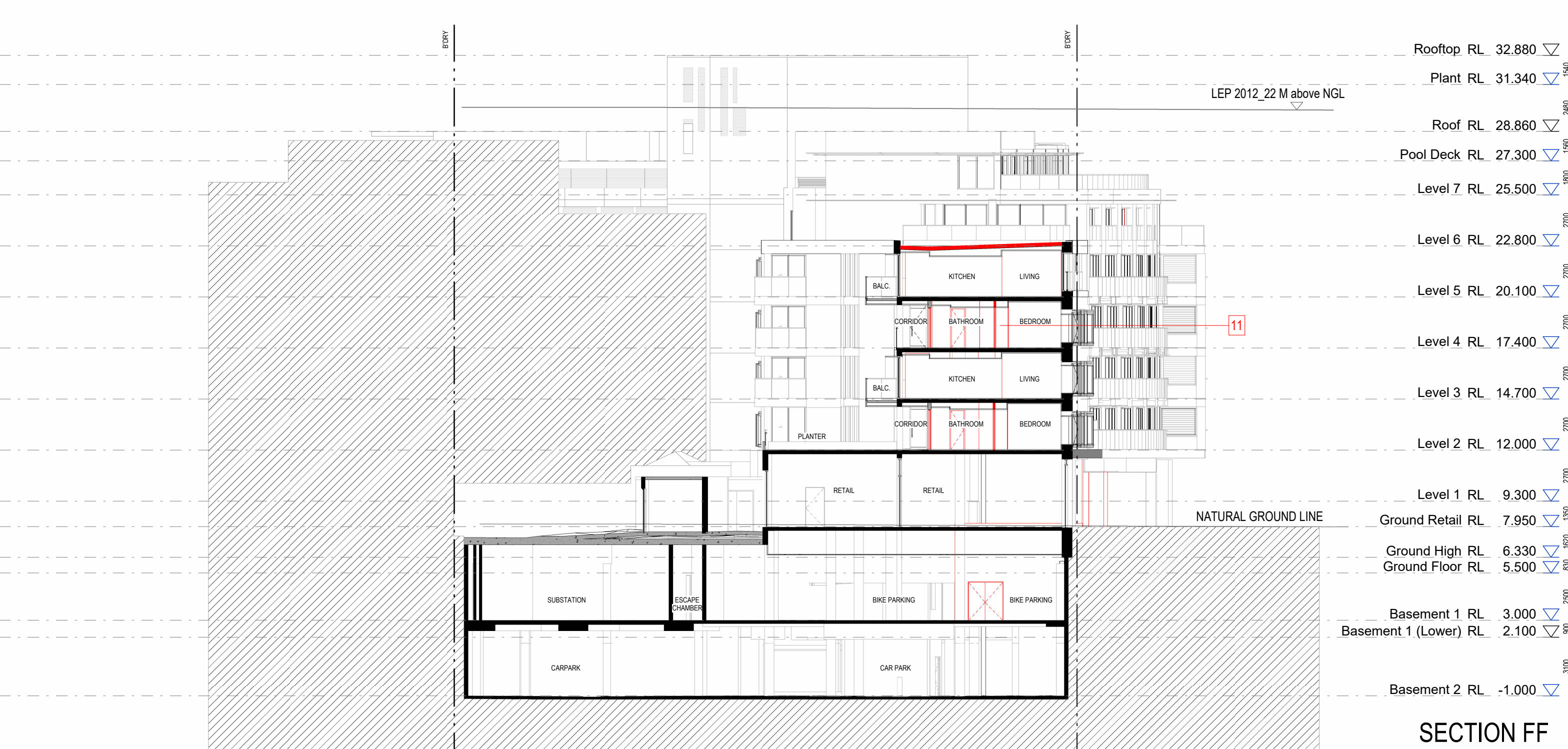
SECTION CC



SECTION DD



SECTION EE



SECTION FF

- NOTES:**
- (C) Antoniaades Architects Pty Ltd all rights reserved. This work is copyright and cannot be reproduced or copied in any form or by any means without the written permission of Antoniaades Architects. Any license to use this document, whether expressed or implied is restricted to the terms of the agreement or implied agreement between Antoniaades Architects Pty Ltd and the intending party.
  - All dimensions in millimeters unless otherwise shown.
  - Use figured dimensions only.
  - Do not scale from drawings.
  - Check all dimensions on site prior to construction.
  - To be made in conjunction with all other documents.
  - Report any discrepancies to Antoniaades Architects Pty Ltd.
  - All boundary dimensions and bearings to be verified by licensed surveyor prior to proceeding with work.

- LEGEND**
- ADJUSTED CAR PARK ARRANGEMENT
  - ADJUSTED PLANT ROOM
  - REMOVED COLUMN
  - RELOCATED GREASE ARRESTER ROOM
  - REDESIGNED EXIT RAMP
  - RELOCATED CAR PARK EXIT LANE
  - REMOVED CARPARK AIR EXHAUST ROOM
  - INTRODUCED MANAGERS ROOM
  - INTRODUCED ELEG & COMMS CBORDS
  - AIR INTAKE RISER INTRODUCED
  - REDESIGNED INTERNAL APARTMENT LAYOUTS
  - MODIFIED LIFT LOBBY SPACE
  - RELOCATED CAR PARK AS PLANT ROOM
  - RELOCATED ELECTRICAL ROOM
  - RELOCATED MAIN SWITCH ROOM
  - RELOCATED CAR WASH BAY
  - INTRODUCED HYDRAULIC PUMP ROOM
  - RELOCATED STORAGE CAGES
  - INTRODUCED PLANT ROOM
  - REVISED RAMP ARRANGEMENT
  - GARBAGE CHUTE RELOCATED
  - REDESIGNED LOBBY INTERNAL AREA
  - RELOCATED BOOSTER CABINET
  - REMOVED PLANT ROOM
  - REMOVED STAIR
  - WINDOW RELOCATED
  - RISER CONVERTED INTO A GARBAGE ROOM
  - PRIVACY SCREEN REMOVED FROM BALCONY
  - REDESIGNED MAIN ENTRY LOBBY GLAZING
  - VERTICLE GLASS SCREEN REMOVED
  - CONVERTED 2 APARTMENTS INTO 1 APARTMENT
  - ADDED LAUNDRY ROOM TO BUILDING MASS
  - ROOF LEVEL INCREASED TO 25.700
  - ROOF OF LEVEL 7 RAISED BY 300MM
  - ROOF REMOVED
  - WINDOW MISSED ON APPROVED ELEVATION
  - TIMBER FLOOR TO BALCONIES REPLACED WITH TILED FLOOR
  - ARTIFICIAL GRASS REPLACED WITH TILED FLOOR
  - INCREASE SIZE OF BALCONY
  - ADDED SKYLIGHTS
  - PLANTER PLINTH FOR ARTWORK
  - MODIFICATION TO AREA SURROUNDING THE SWIMMING POOL
  - COLOURED BLINDS REMOVED

CITY OF SYDNEY  
CITY PLANNING DIVISION  
Section 4.55 APPROVAL  
D/2012/939/J  
01/08/2023  
These plans must be read in conjunction with the decision notice

REV	DESCRIPTION	BY	DATE
A	FOR PRELIM SUBMISSION		08.07.2022
B	PRELIMINARY		13.10.2022
C	FOR S4.55 SUBMISSION	JF	26.01.2023

PROJECT PHASE: DOCUMENTATION

STATUS: S4.55.2 SUBMISSION

PROJECT NO: 21018CC

PROJECT: NAUTIQUE

ADDRESS: 100 Bayswater Road, Rushcutters Bay

DEVELOPMENT MANAGER: DEDICO

SCALE: 1:200 @B1

DRAWING SERIES: A08 - Sections

DRAWING TITLE: SECTIONS

DRAWING NO: A0014

REVISION: C

DRW: EC  
CHK: AA

ANTONIADES ARCHITECTS

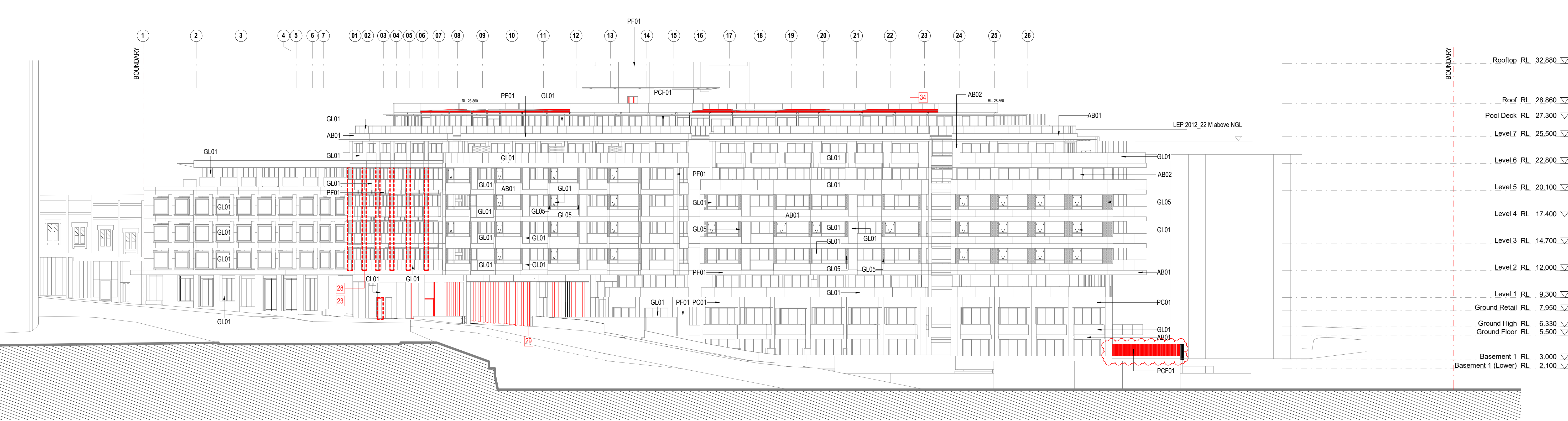
www.antoniaades.com.au  
ACN: 129 731 559

Nominated Architect: Andrea Antoniaades  
NSW Registration: 7954

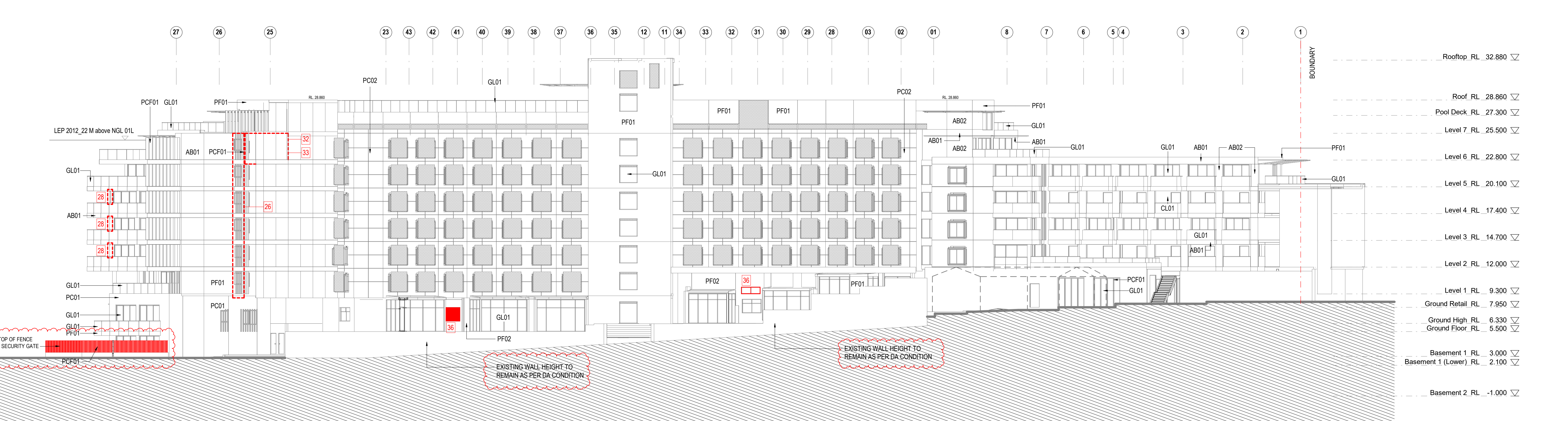




**SOUTH ELEVATION**



**EAST ELEVATION**



**NORTH ELEVATION**

**NOTES:**  
 • (C) Antoniaades Architects Pty Ltd all rights reserved. This work is copyright and cannot be reproduced or copied in any form or by any means without the written permission of Antoniaades Architects. Any license to use this document, whether expressed or implied is restricted to the terms of the agreement or implied agreement between Antoniaades Architects Pty Ltd and the instructing party.  
 • All dimensions in millimeters unless otherwise shown.  
 • Use figured dimensions only.  
 • Do not scale from drawings.  
 • Check all dimensions on site prior to construction.  
 • To be read in conjunction with all other documents.  
 • Report any discrepancies to Antoniaades Architects Pty Ltd.  
 • All boundary dimensions and bearings to be verified by licensed surveyor prior to proceeding with work.

- LEGEND**
1. ADJUSTED CAR PARK ARRANGEMENT
  2. ADJUSTED PLANT ROOM
  3. REMOVED COLUMN
  4. RELOCATED GREASE ARRESTER ROOM
  5. REDESIGNED EXIT RAMP
  6. RELOCATED CAR PARK EXIT LANE
  7. REMOVED CARPARK AIR EXHAUST ROOM
  8. INTRODUCED MANAGERS ROOM
  9. INTRODUCED ELEC & COMM'S CABINETS
  10. AIR INTAKE RISER INTRODUCED
  11. REDESIGNED INTERNAL APARTMENT LAYOUTS
  12. MODIFIED LIFT LOBBY SPACE
  13. RELOCATED CAR PARK AIRS PLANT ROOM
  14. RELOCATED ELECTRICAL ROOM
  15. RELOCATED MAIN SWITCH ROOM
  16. RELOCATED CAR WASH BAY
  17. INTRODUCED HYDRAULIC PUMP ROOM
  18. RELOCATED STORAGE CAGES
  19. INTRODUCED PLANT ROOM
  20. REVISED RAMP ARRANGEMENT
  21. GARBAGE CHUTE RELOCATED
  22. REDESIGNED LOBBY INTERNAL AREA
  23. RELOCATED BOOSTER CABINET
  24. REMOVED PLANT ROOM
  25. REMOVED STAIR
  26. WINDOW RELOCATED
  27. RISER CONVERTED INTO A GARBAGE ROOM
  28. PRIVACY SCREEN REMOVED FROM BALCONY
  29. REDESIGNED MAIN ENTRY LOBBY GLAZING
  30. VERTICAL GLASS SCREEN REMOVED
  31. CONVERTED 2 APARTMENTS INTO 1 APARTMENT
  32. ADDED LAUNDRY ROOM TO BUILDING MASS
  33. ROOF LEVEL INCREASED TO 25.700
  34. ROOF OF LEVEL 7 RAISED BY 300MM
  35. ROOF REMOVED
  36. WINDOW MISSED ON APPROVED ELEVATION
  37. TIMBER FLOOR TO BALCONIES REPLACED WITH TILED FLOOR
  38. ARTIFICIAL GRASS REPLACED WITH TILED FLOOR
  39. INCREASE SIZE OF BALCONY
  40. ADDED SKYLIGHTS
  41. N/A
  42. MODIFICATION TO AREA SURROUNDING THE SWIMMING POOL
  43. COLOURED BLINDS REMOVED

REV	DESCRIPTION	BY	DATE
A	FOR PRE-DA SUBMISSION		06.07.2022
B	PRELIMINARY		13.10.2022
C	FOR S4.55 SUBMISSION	JF	25.01.2023
D	REVISED S4.55 SUBMISSION	JF	31.05.2023
E	REVISED S4.55 SUBMISSION	JF	24.07.2023

**PROJECT PHASE**  
DOCUMENTATION

**STATUS**  
S4.55.2 SUBMISSION

**PROJECT NO.** 21018CC  
**PROJECT** NAUTIQUE  
**ADDRESS** 100 Bayswater Road, Rushcutters Bay

**DEVELOPMENT MANAGER**  
**DEDICO**  
 SCALE: 1:200 @B1  
 0m 4m 8m 10m  
 Scale 1:200

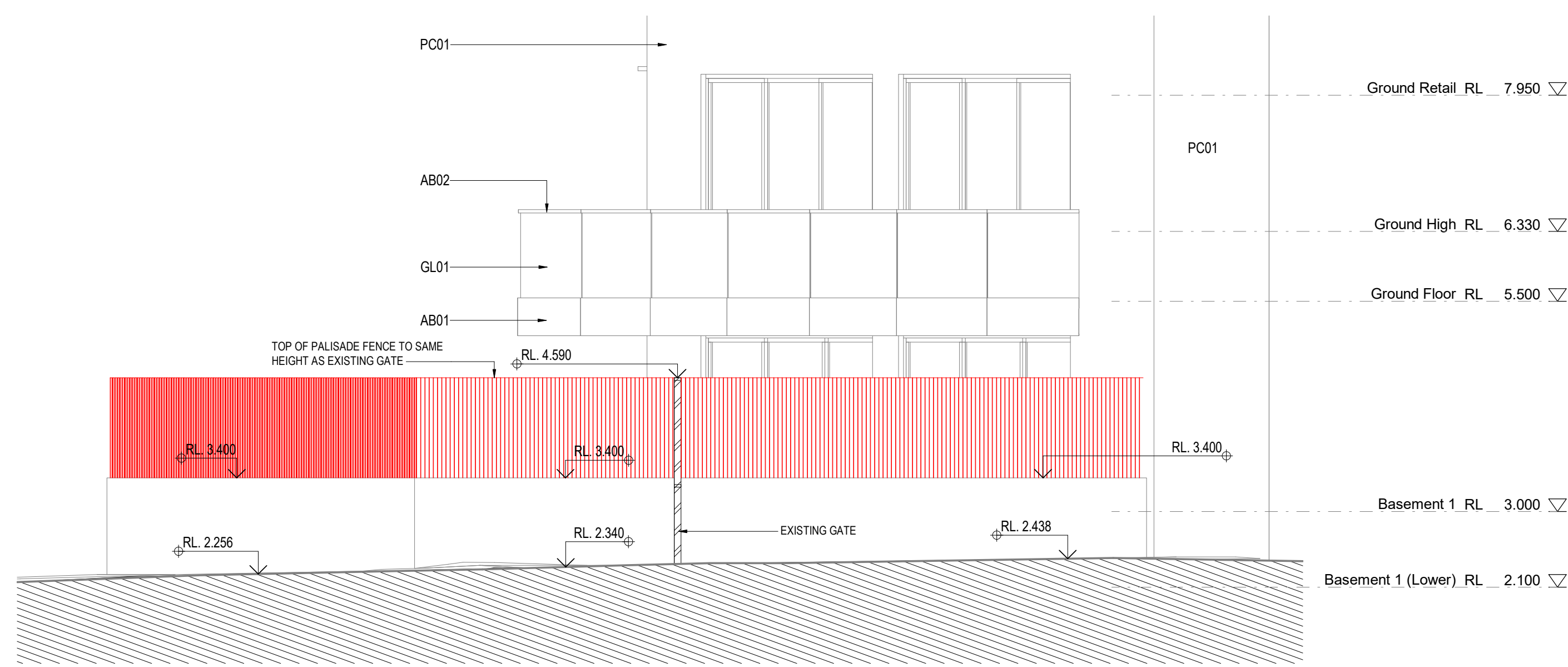
**DRAWING SERIES**  
A07 - Elevations

**DRAWING TITLE**  
ELEVATIONS

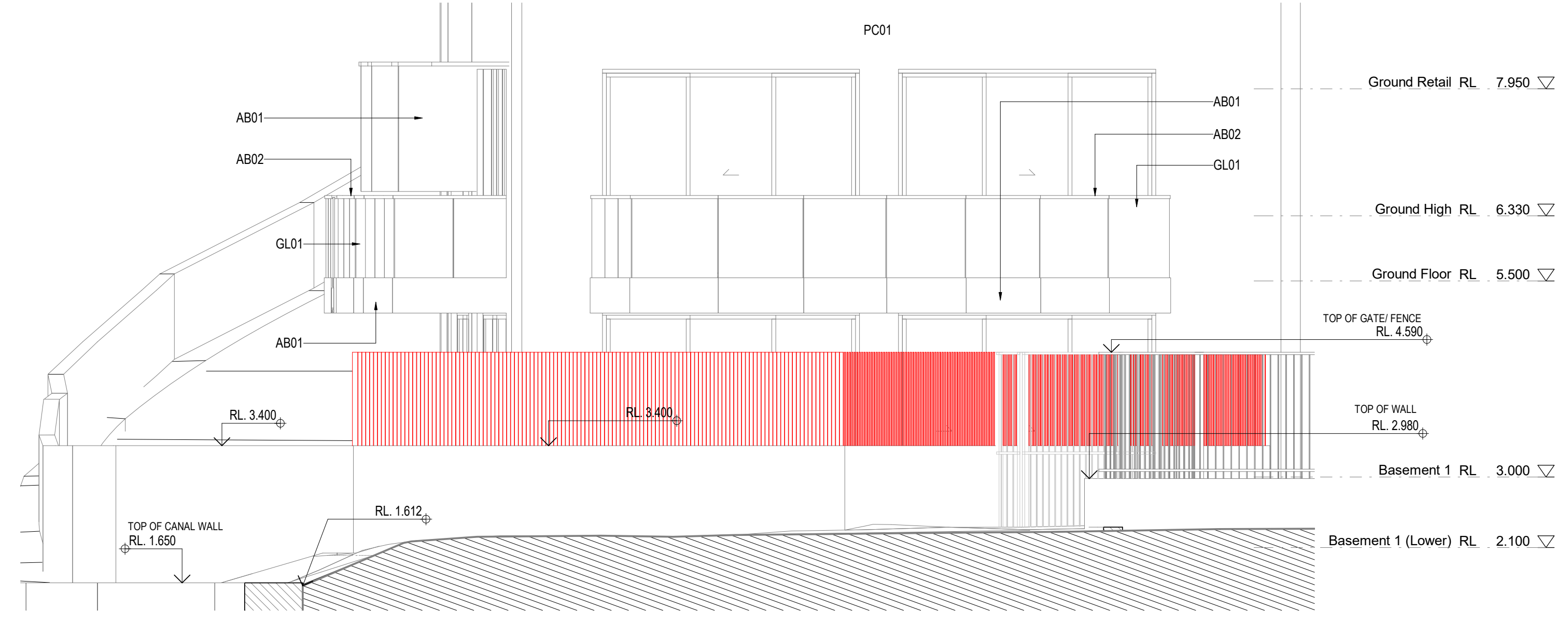
**DRAWING NO.** A0015 **REVISION** E **DRW:** EC **CHK:** AA

**ANTONIADES ARCHITECTS**  
 www.antoniaades.com.au Nominated Architect: Andrea Antoniaades  
 ACN 129 731 559 NSW Registration 7954

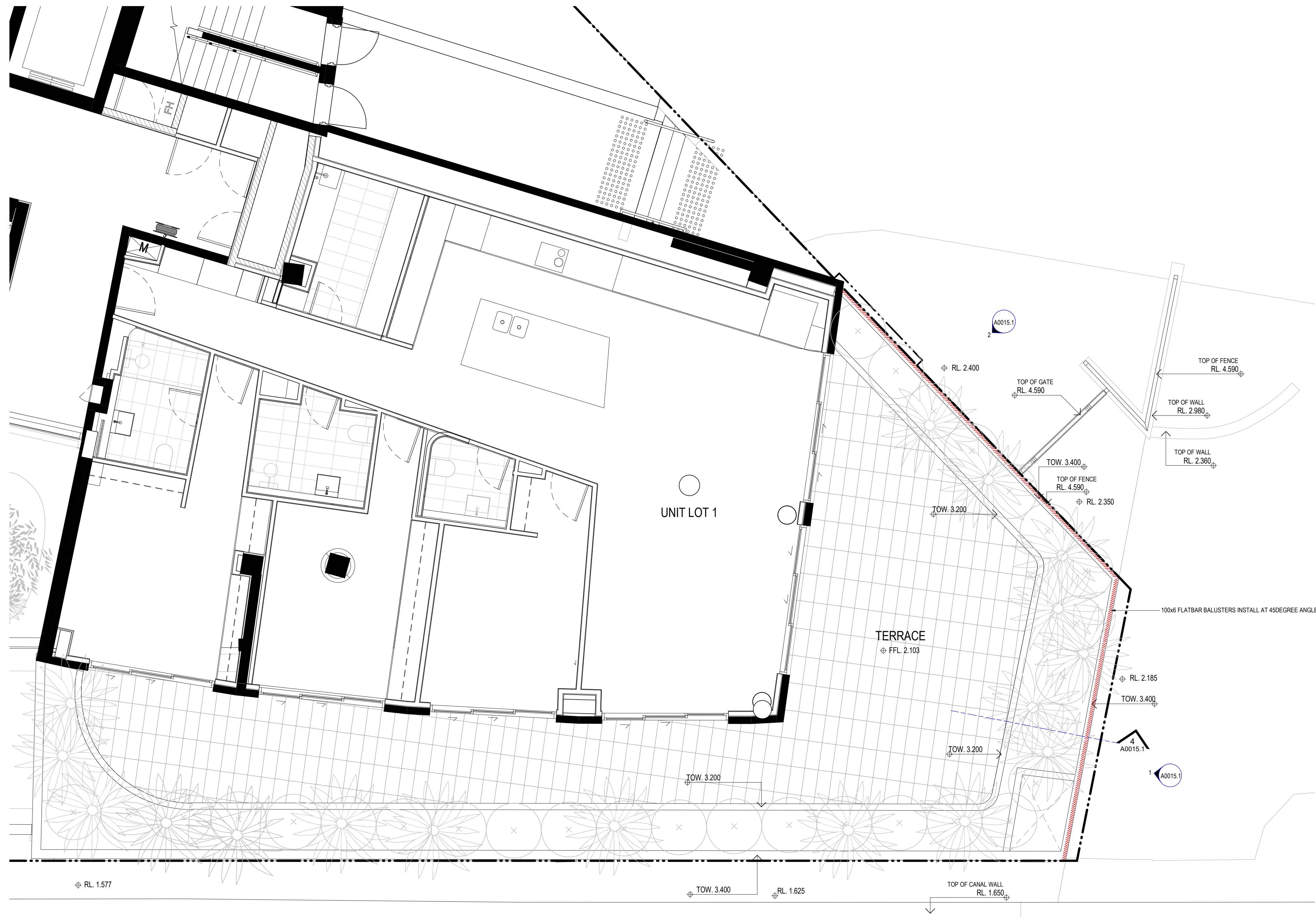




DETAIL ELEVATION 1

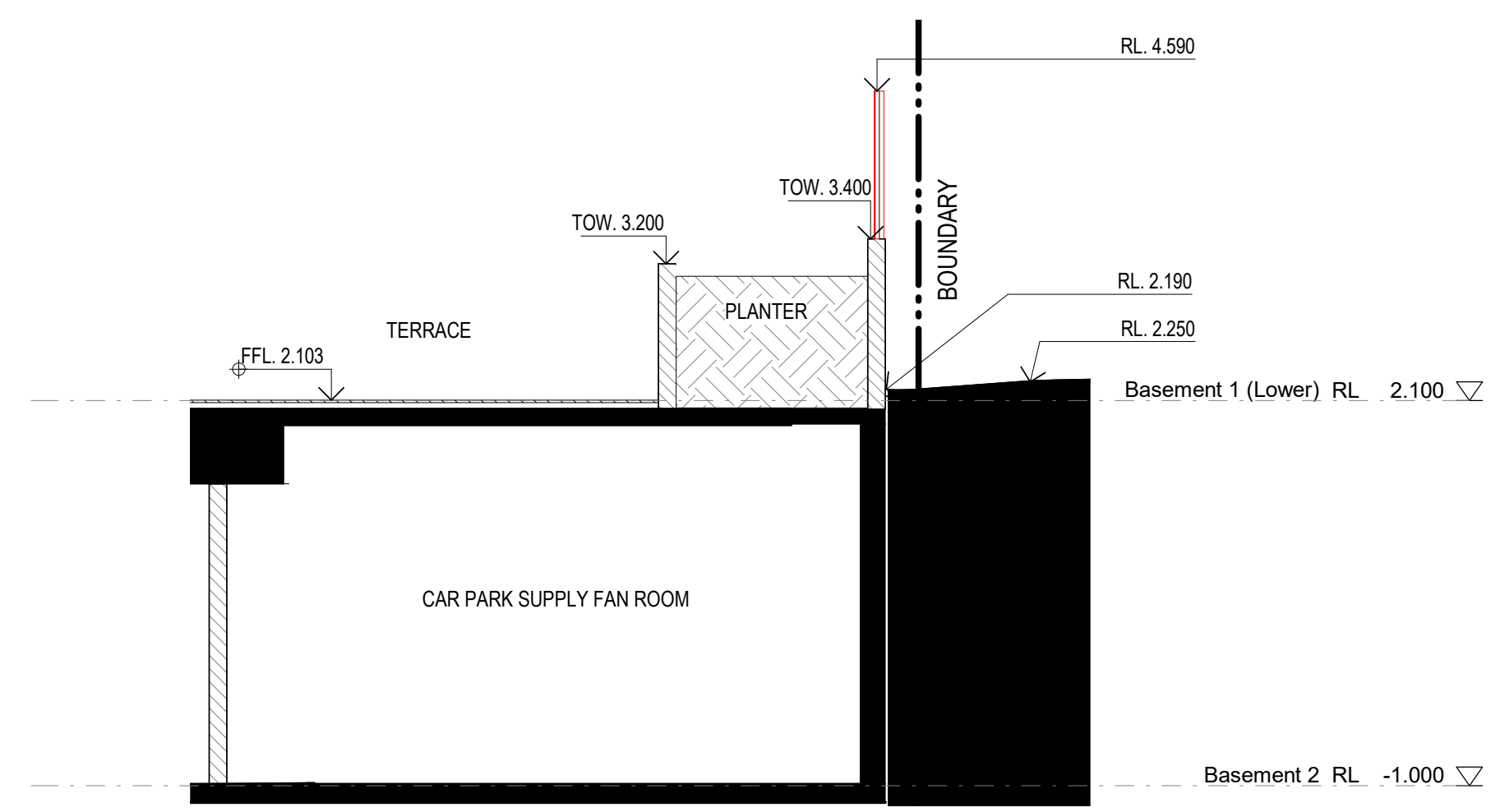


DETAIL ELEVATION 2



STORMWATER CHANNEL

PLAN DETAIL



PLANTER DETAIL

- NOTES:**
- (C) Antoniaades Architects Pty Ltd all rights reserved. This work is copyright and cannot be reproduced or copied in any form or by any means without the written permission of Antoniaades Architects. Any license to use this document, whether expressed or implied is restricted to the terms of the agreement or implied agreement between Antoniaades Architects Pty Ltd and the instructing party.
  - All dimensions in millimeters unless otherwise shown.
  - Use figured dimensions only.
  - Do not scale from drawings.
  - Check all dimensions on site prior to construction.
  - To be read in conjunction with all other documents.
  - Report any discrepancies to Antoniaades Architects Pty Ltd.
  - All boundary dimensions and bearings to be verified by licensed surveyor prior to proceeding with work.

- LEGEND**
- ADJUSTED CAR PARK ARRANGEMENT
  - ADJUSTED PLANT ROOM
  - REMOVED COLUMN
  - RELOCATED GREASE ARRESTER ROOM
  - REDESIGNED EXIT RAMP
  - RELOCATED CAR PARK EXIT LANE
  - REMOVED CARPARK AIR EXHAUST ROOM
  - INTRODUCED MANAGERS ROOM
  - INTRODUCED ELEC & COMM'S CABINETS
  - AIR INTAKE RISER INTRODUCED
  - REDESIGNED INTERNAL APARTMENT LAYOUTS
  - MODIFIED LIFT LOBBY SPACE
  - RELOCATED CAR PARK AS PLANT ROOM
  - RELOCATED ELECTRICAL ROOM
  - RELOCATED MAIN SWITCH ROOM
  - RELOCATED CAR WASH BAY
  - INTRODUCED HYDRAULIC PUMP ROOM
  - RELOCATED STORAGE CAGES
  - INTRODUCED PLANT ROOM
  - REVISED RAMP ARRANGEMENT
  - GARBAGE CHUTE RELOCATED
  - REDESIGNED LOBBY INTERNAL AREA
  - RELOCATED BOOSTER CABINET
  - REMOVED PLANT ROOM
  - REMOVED STAIR
  - WINDOW RELOCATED
  - RISER CONVERTED INTO A GARBAGE ROOM
  - PRIVACY SCREEN REMOVED FROM BALCONY
  - REDESIGNED MAIN ENTRY LOBBY GLAZING
  - VERTICAL GLASS SCREEN REMOVED
  - CONVERTED 2 APARTMENTS INTO 1 APARTMENT
  - ADDED LAUNDRY ROOM TO BUILDING MASS
  - ROOF LEVEL INCREASED TO 25.700
  - ROOF OF LEVEL 7 RAISED BY 300MM
  - ROOF REMOVED
  - WINDOW MISSED ON APPROVED ELEVATION
  - TIMBER FLOOR TO BALCONIES REPLACED WITH TILED FLOOR
  - ARTIFICIAL GRASS REPLACED WITH TILED FLOOR
  - INCREASE SIZE OF BALCONY
  - ADDED SKYLIGHTS
  - N/A
  - MODIFICATION TO AREA SURROUNDING THE SWIMMING POOL
  - COLOURED BLINDS REMOVED

CITY OF SYDNEY  
CITY PLANNING DIVISION  
Section 4.55 APPROVAL  
D/2012/939/J  
01/08/2023  
These plans must be read in conjunction with the decision notice

REV	DESCRIPTION	BY	DATE
A	ADDITIONAL INFORMATION FOR S4.55	JF	18.05.2023
B	REVISED S4.55 SUBMISSION	JF	24.06.2023
C	REVISED S4.55 SUBMISSION	JF	24.07.2023

PROJECT PHASE: DOCUMENTATION

STATUS: S4.55.2 SUBMISSION

PROJECT NO: 21018CC

PROJECT: NAUTIQUE

ADDRESS: 100 Bayswater Road, Rushcutters Bay

DEVELOPMENT MANAGER: DEDICO

SCALE: As indicated @B1

DRAWING SERIES: A07 - Elevations

DRAWING TITLE: DETAIL ELEVATION & SECTION

DRAWING NO: A0015.1

REVISION: C

DRW: RT

CHK: JF